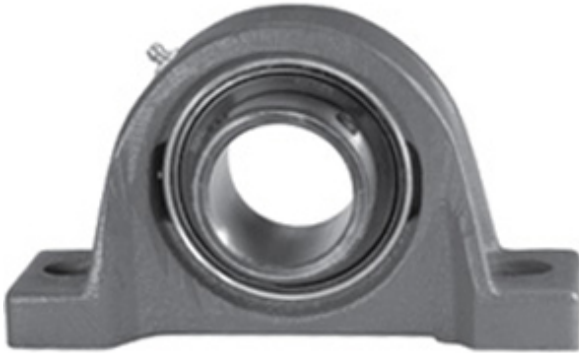




Shandong Shenjie Bearing Co., Ltd.

1.938 Inch | 49.225 Millimeter x 2.094 Inch |
53.18 Millimeter x 2.188 Inch | 55.575 Millimeter
LINK BELT PL3U231E3 Pillow Block Bearings



PL3U231E3 Bearing 2D drawings and 3D CAD models

Bearing No. PL3U231E3

Category	Pillow Block Bearings
Inventory	0.0
Manufacturer Name	REXNORD
Minimum Buy Quantity	N/A
Weight	2.68
EAN	0793699001471
Product Group	M06110
Number of Mounting Holes	2
Mounting Method	Set Screw
Housing Style	2 Bolt Pillow Block
Rolling Element	Ball Bearing
Housing Material	Cast Iron
Expansion / Non-expansion	Non-expansion
Mounting Bolts	5/8 Inch
Relubricatable	Yes
Insert Part Number	UG231E3L
Seals	Triple Lip Contact
Housing Configuration	1 Piece Solid
Inch - Metric	Inch
Other Features	Single Row Standard Duty Low Base Wide Inner Race
Long Description	2 Bolt Pillow Block; 1-15/16" Bore; 2-3/16" Base to Center Height; Set Screw Mount; Ball Bearing;



Shandong Shenjie Bearing Co., Ltd.

	Relubricatable; Cast Iron; Triple Lip Contact; Non- expansion
Category	Pillow Block
UNSPSC	31171511
Harmonized Tariff Code	8483.20.40.40
Noun	Bearing
Keyword String	Pillow Block
Manufacturer URL	http://www.rexnord.com
Manufacturer Item Number	PL3U231E3
Manufacturer Internal Number	5800147
Weight / LBS	5.9
Nominal Bolt Center to Center	6.3 Inch 160 Millimeter
Bolt Spacing Maximum	0 Inch 0Millimeter
Actual Bolt Center to Center	6.2 Inch 157Millimeter
D	2.094 Inch 53.18 Millimeter
Bolt Spacing Minimum	0 Inch 0Millimeter
d	1.938 Inch 49.225 Millimeter
B	2.188 Inch 55.575 Millimeter