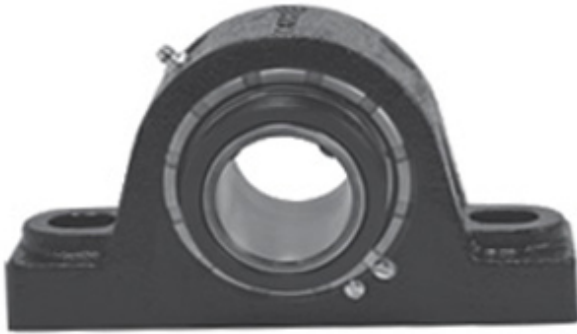




# Shandong Shenjie Bearing Co., Ltd.

3 Inch | 76.2 Millimeter x 4 Inch | 101.6  
Millimeter x 3.25 Inch | 82.55 Millimeter LINK  
BELT PEB22448EK6 Pillow Block Bearings



PEB22448EK6 Bearing 2D drawings and 3D CAD models

Bearing No. PEB22448EK6

Category	Pillow Block Bearings
Inventory	0.0
Manufacturer Name	REXNORD
Minimum Buy Quantity	N/A
Weight	12.26
EAN	0793699714210
Product Group	M06288
Number of Mounting Holes	2
Mounting Method	Concentric Collar
Housing Style	2 Bolt Pillow Block
Rolling Element	Spherical Roller Bearing
Housing Material	Cast Iron
Expansion / Non-expansion	Expansion
Mounting Bolts	3/4 Inch
Relubricatable	Yes
Insert Part Number	B22448EL
Seals	Spring Loaded Lip
Housing Configuration	1 Piece Solid
Inch - Metric	Inch
Other Features	Double Row   Single Collar   Extended Inner Race   With Set Screw
Long Description	2 Bolt Pillow Block; 3" Bore; 3-1/4" Base to Center Height; Concentric Collar Mount; Spherical Roller



## Shandong Shenjie Bearing Co., Ltd.

	Bearing; Relubricatable; Cast Iron; Spring Loaded Lip; Expansion
Category	Pillow Block
UNSPSC	31171511
Harmonized Tariff Code	8483.20.40.80
Noun	Bearing
Keyword String	Pillow Block
Manufacturer URL	<a href="http://www.rexnord.com">http://www.rexnord.com</a>
Manufacturer Item Number	PEB22448EK6
Manufacturer Internal Number	0171421
Weight / LBS	27
Nominal Bolt Center to Center	8.1 Inch   206.4 Millimeter
B	3.25 Inch   82.55 Millimeter
Actual Bolt Center to Center	8.1 Inch   206 Millimeter
Bolt Spacing Minimum	0 Inch   0 Millimeter
Bolt Spacing Maximum	0 Inch   0 Millimeter
d	3 Inch   76.2 Millimeter
D	4 Inch   101.6 Millimeter