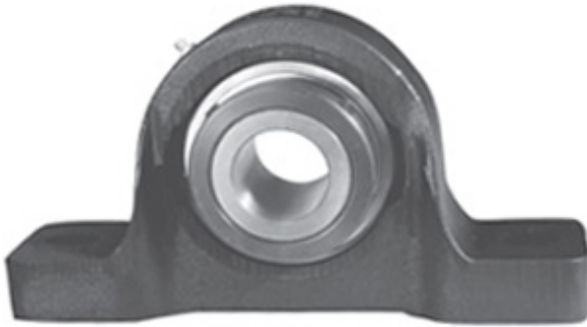




## Shandong Shenjie Bearing Co., Ltd.

2.188 Inch | 55.575 Millimeter x 3.063 Inch | 77.8  
Millimeter x 3.5 Inch | 88.9 Millimeter LINK BELT  
PU335Z511 Pillow Block Bearings



PU335Z511 Bearing 2D drawings and 3D CAD models

Bearing No. PU335Z511

Category	Pillow Block Bearings
Inventory	0.0
Manufacturer Name	REXNORD
Minimum Buy Quantity	N/A
Weight	10.737
Product Group	M06110
Number of Mounting Holes	2
Mounting Method	Concentric Collar
Housing Style	2 Bolt Pillow Block
Rolling Element	Ball Bearing
Housing Material	Cast Iron
Expansion / Non-expansion	Non-expansion
Mounting Bolts	3/4 Inch
Relubricatable	Yes
Insert Part Number	UG335L
Seals	Steel Clad Clearance
Housing Configuration	1 Piece Solid
Inch - Metric	Inch
Other Features	Single Row   Heavy Duty   Single Collar   Standard Backing   With Set Screw
Long Description	2 Bolt Pillow Block; 2-3/16" Bore; 3-1/2" Base to Center Height; Concentric Collar Mount; Ball Bearing; Relubricatable; Cast Iron; Steel Clad Clearance; Non-



## Shandong Shenjie Bearing Co., Ltd.

	expansion
Category	Pillow Block
UNSPSC	31171511
Harmonized Tariff Code	8483.20.40.40
Noun	Bearing
Keyword String	Pillow Block
Manufacturer URL	<a href="http://www.rexnord.com">http://www.rexnord.com</a>
Manufacturer Item Number	PU335Z511
Manufacturer Internal Number	5873751
Weight / LBS	21.5
Bolt Spacing Minimum	0 Inch   0Millimeter
d	2.188 Inch   55.575 Millimeter
Bolt Spacing Maximum	0 Inch   0Millimeter
B	3.5 Inch   88.9 Millimeter
Nominal Bolt Center to Center	10.3 Inch   260.5 Millimeter
D	3.063 Inch   77.8 Millimeter
Actual Bolt Center to Center	10.3 Inch   262Millimeter