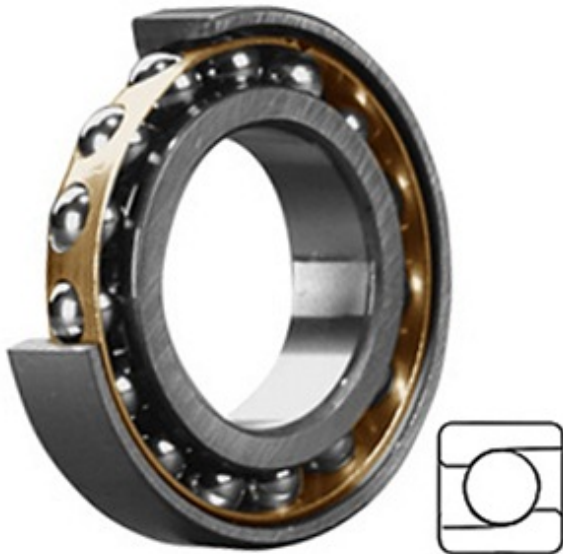




Shandong Shenjie Bearing Co., Ltd.



7322 BMG P/6 Bearing 2D drawings and 3D CAD models

4.331 Inch | 110 Millimeter x 9.449 Inch | 240 Millimeter x 1.969 Inch | 50 Millimeter
CONSOLIDATED BEARING 7322 BMG P/6
Precision Ball Bearings

Bearing No. 7322 BMG P/6

| | |
|----------------------|--|
| Category | Precision Ball Bearings |
| Inventory | 0.0 |
| Manufacturer Name | CONSOLIDATED BEARING |
| Minimum Buy Quantity | N/A |
| Weight | 10.1 |
| EAN | 0644075216531 |
| Product Group | B04270 |
| Enclosure | Open |
| Precision Class | ABEC 3 ISO P6 |
| Material - Ball | Steel |
| Number of Bearings | 1 (Single) |
| Contact Angle | 40 Degree |
| Preload | None |
| Raceway Style | 1 Rib Inner Ring and Outer Ring |
| Cage Material | Bronze |
| Rolling Element | Ball Bearing |
| Mounting Arrangement | Universal |
| Flush Ground | Yes |
| Inch - Metric | Metric |
| Other Features | Single Row Angular Contact |
| Long Description | 110MM Bore; 240MM Outside Diameter; 50MM |



Shandong Shenjie Bearing Co., Ltd.

| | |
|--------------------------|--|
| | Width; Open Enclosure; ABEC 3 ISO P6 Precision; Steel Ball Material; 1 (Single) Bearing; 40 Degree Contact Angle; Bronze Cage Material; 1 Rib Inner Ring and |
| Category | Precision Ball Bearings |
| UNSPSC | 31171531 |
| Harmonized Tariff Code | 8482.10.50.28 |
| Noun | Bearing |
| Keyword String | Ball Angular Contact |
| Manufacturer URL | http://www.consbrgs.com |
| Manufacturer Item Number | 7322 BMG P/6 |
| Weight / LBS | 24.53 |
| B | 1.969 Inch 50 Millimeter |
| d | 4.331 Inch 110 Millimeter |
| D | 9.449 Inch 240 Millimeter |