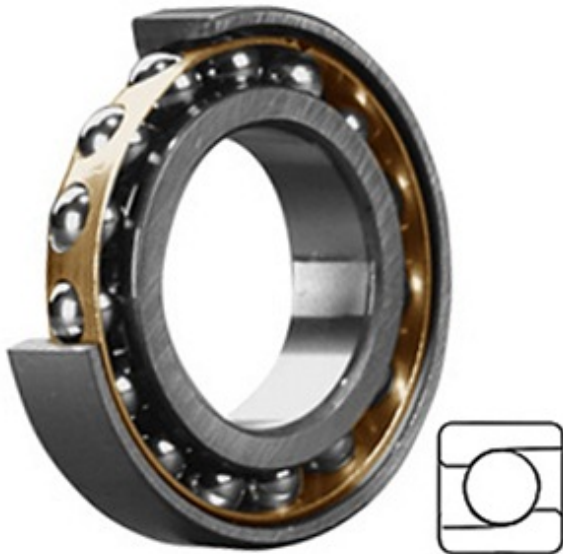




Shandong Shenjie Bearing Co., Ltd.



7221 BMG P/6 Bearing 2D drawings and 3D CAD models

4.134 Inch | 105 Millimeter x 7.48 Inch | 190 Millimeter x 1.417 Inch | 36 Millimeter
CONSOLIDATED BEARING 7221 BMG P/6
Precision Ball Bearings

Bearing No. 7221 BMG P/6

Category	Precision Ball Bearings
Inventory	0.0
Manufacturer Name	CONSOLIDATED BEARING
Minimum Buy Quantity	N/A
Weight	3.95
EAN	0644075151696
Product Group	B04270
Enclosure	Open
Precision Class	ABEC 3 ISO P6
Material - Ball	Steel
Number of Bearings	1 (Single)
Contact Angle	40 Degree
Preload	None
Raceway Style	1 Rib Inner Ring and Outer Ring
Cage Material	Bronze
Rolling Element	Ball Bearing
Mounting Arrangement	Universal
Flush Ground	Yes
Inch - Metric	Metric
Other Features	Single Row Angular Contact
Long Description	105MM Bore; 190MM Outside Diameter; 36MM



Shandong Shenjie Bearing Co., Ltd.

	Width; Open Enclosure; ABEC 3 ISO P6 Precision; Steel Ball Material; 1 (Single) Bearing; 40 Degree Contact Angle; Bronze Cage Material; 1 Rib Inner Ring and
Category	Precision Ball Bearings
UNSPSC	31171531
Harmonized Tariff Code	8482.10.50.28
Noun	Bearing
Keyword String	Ball Angular Contact
Manufacturer URL	http://www.consbrgs.com
Manufacturer Item Number	7221 BMG P/6
Weight / LBS	9.59
d	4.134 Inch 105 Millimeter
B	1.417 Inch 36 Millimeter
D	7.48 Inch 190 Millimeter